



Total Solution Provider in Saw Device

SA65ED

65.54MHz IF SAW Filter
18.95MHz Bandwidth
Revision 1: 29. Oct. 2007



- Electrical Characteristics
 - Package Dimensions
 - Testing Environment
 - Frequency Characteristics
-

SAWNICS Inc.

460 Cheonheung-ri, Seonggeo-eup, Cheonan-si, Chungcheongnam-do, 330-836 / Korea.
Tel: +82 41 550 9372 / Fax: +82 41 550 9399 / www.sawnics.com

□ Electrical Characteristics

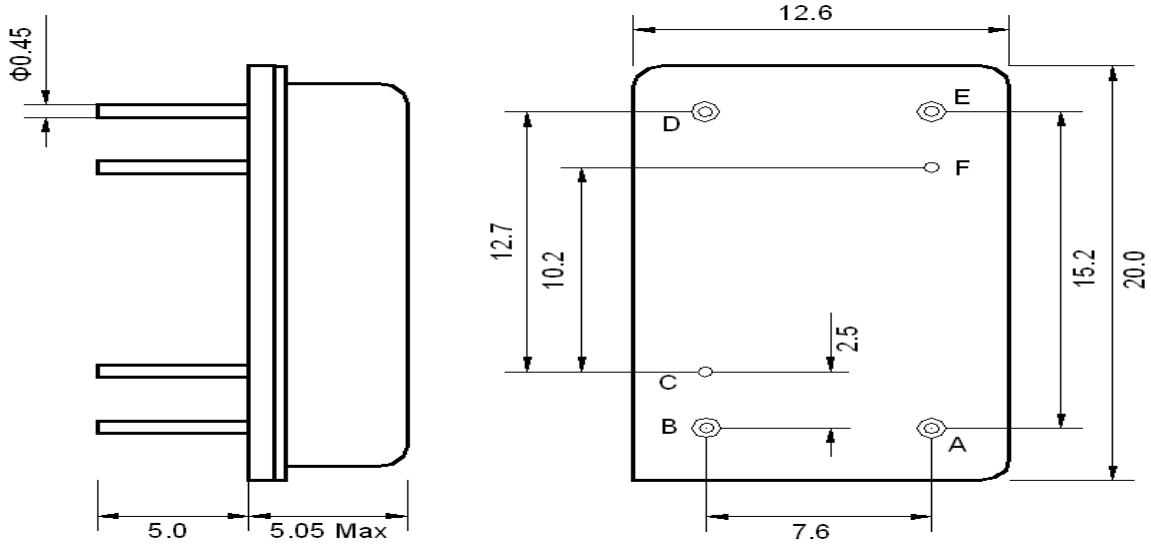
Maximum Ratings

Parameters Description	Unit	Minimum	Typical	Maximum
Operating Temperature Range	°C	-30	-	80
Storage Temperature Range	°C	-40	-	85
Maximum DC Voltage	V	-	-	10
Maximum Input Power	dBm	-	-	10
Source Impedance (single ended) ⁽¹⁾	Ω	-	50	-
Load Impedance (single ended) ⁽¹⁾	Ω	-	50	-
Package type & size	D			
Length x Width	mm ²	-	20.0x12.6	-
Height	mm	-	-	5.05

Electrical Specification

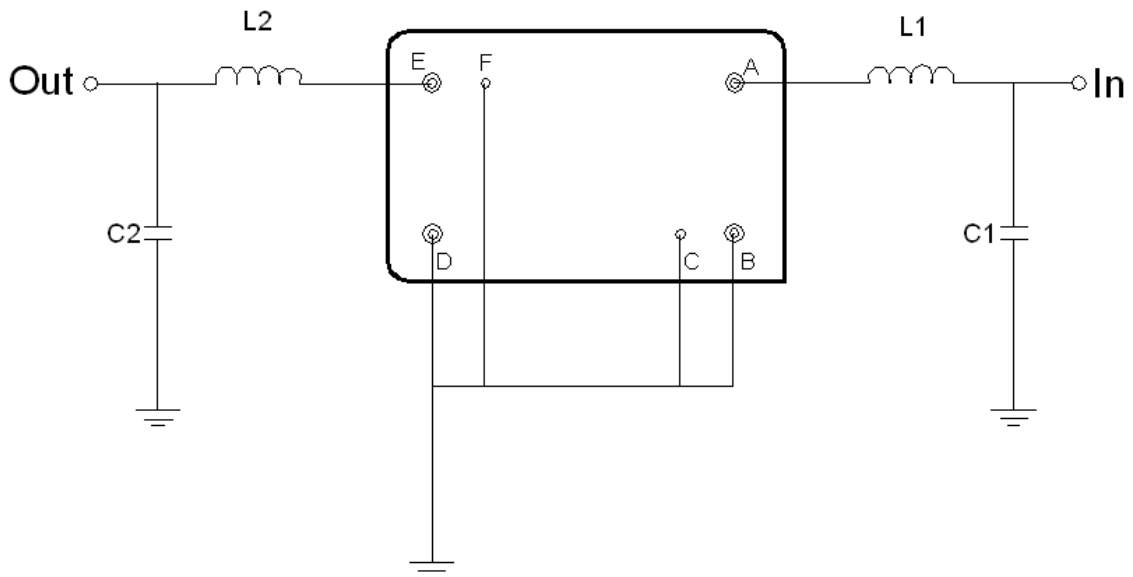
Parameters Description	Unit	Minimum	Typical	Maximum
Center Frequency (Fo)	MHz	65.5	65.54	65.58
Insertion Loss at Fo	dB	-	25.4	26.5
Amplitude Ripple Variation (58.0MHz ~ 73.0 MHz)	dB _{p-p}	-	0.45	0.55
Group Delay Variation (58.0MHz ~ 73.0 MHz)	nsec	-	40	100
Absolute Delay at Fo	μsec	-	2.35	-
Temperature Coefficient	ppm/°C	-	-72	-
Bandwidth at -1.0 dB	MHz	18.95	19.23	-
Bandwidth at -3.0 dB	MHz	19.35	19.60	-
Bandwidth at -35.0 dB	MHz	-	20.86	21
Bandwidth at -40.0 dB	MHz	-	20.93	21.1
Attenuation Rejection (Fo±20MHz)	dB	55	60	-

Package Dimensions



Pin Description	
B, C, D, F	Ground
A	Input
E	Output

Testing Environment



Test Fixture & Values	
Input	L1 = 180 nH, C1 = 30 pF
Output	L2 = 180 nH, C2 = 30 pF
Source/Load Impedance	50 Ω

□ Frequency Characteristics

Frequency Response

